

## SPEC for Mass Production

Spec No.	TQ3C-8EAF0-E1YAG67-01
Date	August 29, 2024

### **TYPE : TCG104VGLCCANN-AN41**

<10.4 inch VGA transmissive color TFT with LED backlight>

#### CONTENTS

1. Application
2. Construction and outline
3. Mechanical specifications
4. Absolute maximum ratings
5. Electrical characteristics
6. Optical characteristics
7. Interface signals
8. Input timing characteristics
9. Lot number identification
10. Warranty
11. Precautions for use
12. Reliability test data
13. Outline drawing



KYOCERA CORPORATION

Original Issue Date	Designed by: Engineering dept.			Confirmed by: QA dept.
	Prepared	Checked	Approved	Approved
January 22, 2018	<i>K. Komurasaki</i>	<i>T. Fukui</i>	<i>M. Kato</i>	<i>T. Sawada</i>

Spec No.	Part No.	Page
TQ3C-8EAF0-E1YAG67-01	TCG104VGLCCANN-AN41	-

## **Warning**

1. This Kyocera LCD module has been specifically designed for use only in electronic devices and industrial machines in the area of audio control, office automation, industrial control, home appliances, etc. The module should not be used in applications where the highest level of safety and reliability are required and module failure or malfunction of such module results in physical harm or loss of life, as well as enormous damage or loss. Such fields of applications include, without limitation, medical, aerospace, communications infrastructure, atomic energy control. Kyocera expressly disclaims any and all liability resulting in any way to the use of the module in such applications.
2. Customer agrees to indemnify, defend and hold Kyocera harmless from and against any and all actions, claims, damages, liabilities, awards, costs, and expenses, including legal expenses, resulting from or arising out of Customer's use, or sale for use, or Kyocera modules in applications.

## **Caution**

1. Kyocera shall have the right, which Customer hereby acknowledges, to immediately scrap or destroy tooling for Kyocera modules for which no Purchase Orders have been received from the Customer in a two-year period.
2. Please note that we may not be able to respond to new environmental regulations after receiving the final mass production order for this product.

Spec No. TQ3C-8EAF0-E1YAG67-01	Part No. TCG104VGLCCANN-AN41	Page -
-----------------------------------	---------------------------------	-----------

### Revision record

Date		Designed by : Engineering dept.			Confirmed by : QA dept.
		Prepared	Checked	Approved	Approved
August 29, 2024		<i>K. Komurasaki</i>	<i>T. Fukui</i>	<i>M. Kato</i>	<i>T. Sawada</i>
Rev. No.	Date	Page	Descriptions		
01	Aug. 29, 2024	Cover page	Change the company name from KYOCERA DISPLAY CORPORATION to KYOCERA CORPORATION.		
		1	3. Mechanical specification Outline dimension: Change from provisional to official values.		
		4	5-2. Constant current circuit for LED Backlight Current consumption: Change from provisional to official values.		
		5	PWM Timing Diagram Revise the note.		
		6	6. Optical characteristics Brightness and Chromaticity coordinates: Change from provisional to official values.		
		7	6-4. Brightness measuring point Correct the figure and description.		
		9	8-1. Timing Characteristics Revise the note numbers.		
		11	9. Lot number identification Add a data matrix and revise the description.		
		-	Revise the outline drawing.		

# 1. Application

This document defines the specification of TCG104VGLCCANN-AN41. (RoHS Compliant)

# 2. Construction and outline

LCD	: Transmissive color dot matrix type TFT
Backlight system	: LED
Polarizer	: Anti-Glare treatment
Additional circuit	: Timing controller, Power supply (3.3V input) (with constant current circuit for LED Backlight)

# 3. Mechanical specifications

Item	Specification	Unit
Outline dimensions 1)	230(W)×180.2(H)×10.5(D)	mm
Active area	211.2(W)×158.4(H) (26.4cm/10.4 inch(Diagonal))	mm
Dot format	640×(R,G,B)(W)×480(H)	dot
Dot pitch	0.11(W)×0.33(H)	mm
Base color 2)	Normally White	-
Mass	500	g

- 1) Projection not included. Please refer to outline for details.
- 2) Due to the characteristics of the LCD material, the color varies with environmental temperature.

## 4. Absolute maximum ratings

### 4-1. Electrical absolute maximum ratings

Item		Symbol	Min.	Max.	Unit
Supply voltage(+3.3V)		V <sub>DD</sub>	0	4.0	V
Supply voltage(+24V)		V <sub>IN</sub>	-0.3	26	V
Input signal voltage	1)	V <sub>I1</sub>	-0.3	VDD+0.3	V
	2)	V <sub>I2</sub>	-0.3	VDD+0.3	V
	3)	V <sub>I3</sub>	-0.3	14	V

1) SC

2) RxIN0-/+, RxIN1-/+, RxIN2-/+, RxIN3-/+, CK IN-/+,  
BLBRT, BLEN

### 4-2. Environmental absolute maximum ratings

Item		Symbol	Min.	Max.	Unit
Operating temperature (Ambient)	1)	T <sub>OP</sub>	-30	80	°C
Operating temperature (Panel)	2)	T <sub>OP</sub>	-30	80	°C
Storage temperature	3)	T <sub>STO</sub>	-30	80	°C
Operating humidity	4)	H <sub>OP</sub>	10	5)	%RH
Storage humidity	4)	H <sub>STO</sub>	10	5)	%RH
Vibration		-	6)	6)	-
Shock		-	7)	7)	-

1) Operating temperature means a temperature which operation shall be guaranteed. Since display performance is evaluated at 25°C, another temperature range should be confirmed.

2) Panel / Backboard surface temperature (all the surface)

3) Temp. = -30°C < 48h, Temp. = 80°C < 168h

Store LCD at normal temperature/humidity. Keep them free from vibration and shock.

An LCD that is kept at a low or a high temperature for a long time can be defective due to other conditions, even if the low or high temperature satisfies the standard.

(Please refer to "Precautions for Use" for details.)

4) Non-condensing

5) Temp. ≤ 40°C, 85%RH Max.

Temp. > 40°C, Absolute humidity shall be less than 85%RH at 40°C.

6)

Frequency	10~55 Hz	Acceleration value (0.3~9 m/s <sup>2</sup> )
Vibration width	0.15mm	
Interval	10-55-10 Hz	1 minutes

2 hours in each direction X, Y, Z (6 hours total)

EIAJ ED-2531

7) Acceleration: 490 m/s<sup>2</sup>, Pulse width: 11 ms

3 times in each direction: ±X, ±Y, ±Z

EIAJ ED-2531

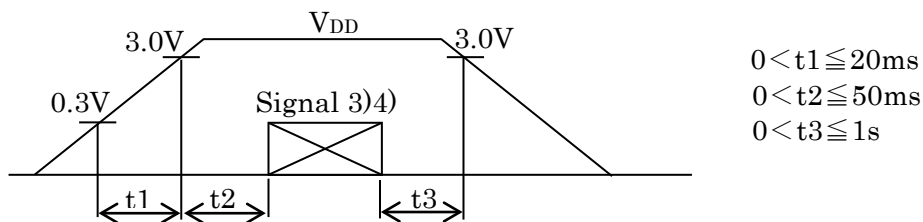
## 5. Electrical characteristics

### 5-1. LCD

Temp. = -30~80°C

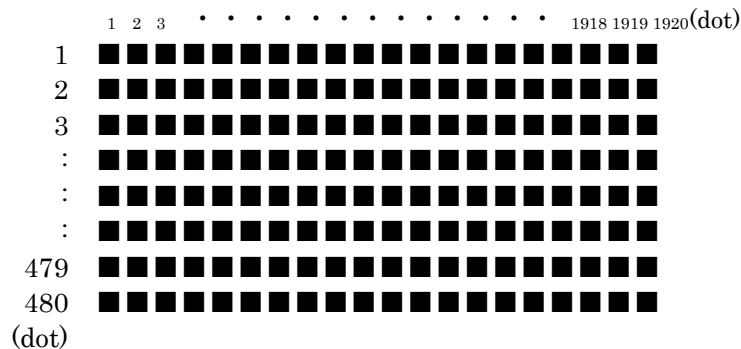
Item	Symbol	Condition	Min.	Typ.	Max.	Unit
Supply voltage 1)	$V_{DD}$	-	3.0	3.3	3.6	V
Current consumption	$I_{DD}$	2)	-	210	270	mA
Permissive input ripple voltage	$V_{RP}$	$V_{DD}=3.3V$	-	-	100	mV <sub>p-p</sub>
Input signal voltage 3)	$V_{IL}$	"Low" level	0	-	0.2VDD	V
	$V_{IH}$	"High" level	0.8VDD	-	$V_{DD}$	V
Input leak current 3)	$I_{OL}$	$V_{I3}=0V$	-10	-	10	$\mu A$
	$I_{OH}$	$V_{I3}=3.3V$	-	-	350	$\mu A$
Differential input voltage 4)	$ V_{ID} $	-	100	-	600	mV
Differential input threshold voltage 4)	$V_{TL}$	"Low" level	-100	-	-	mV
	$V_{TH}$	"High" level	-	-	100	mV
LVDS Common mode voltage 4)	$V_{ICM}$		$ V_{ID} /2$	1.2	$2.4 -  V_{ID} /2$	
Terminator	$R_1$	-	-	100	-	$\Omega$

#### 1) $V_{DD}$ -turn-on conditions



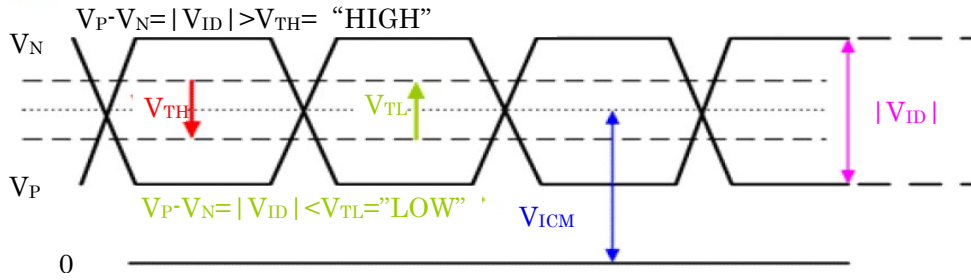
#### 2) Display pattern:

$V_{DD} = 3.3V$ , Temp. = 25°C



#### 3) Input signal : SC

- 4) Input signal : RxIN3+, RxIN3-, RxIN2+, RxIN2-, RxIN1+, RxIN1-, RxIN0+, RxIN0-  
CK IN+, CK IN-



## 5-2. Constant current circuit for LED Backlight

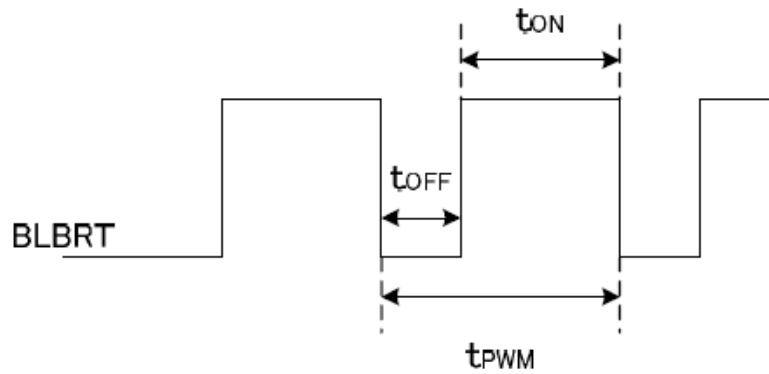
Temp. = -30~80°C

Item	Symbol	Condition	Min.	Typ.	Max.	Unit
Supply voltage 1)	$V_{IN}$	-	22.8	24.0	25.2	V
Current consumption	$I_{IN}$	2)	-	280	400	mA
Permissive input ripple voltage	$V_{RP\_BL}$	$V_{IN}=24.0V$	-	-	100	mVp-p
BLBRT Input signal voltage	$V_{IL\_BLBRT}$	"Low" level	0	-	0.8	V
	$V_{IH\_BLBRT}$	"High" level	2.3	-	13.2	V
BLBRT Input pull-up resistance	$R_{IN\_BLBRT}$	$V_{IN}=24.0V$	-	10	-	k $\Omega$
		$V_{IN}=0V$	-	1.6	-	k $\Omega$
BLEN Input signal voltage	$V_{IL\_BLEN}$	"Low" level	0	-	0.8	V
	$V_{IH\_BLEN}$	"High" level	2.3	-	13.2	V
BLEN Input pull-up resistance	$R_{IN\_BLEN}$	$V_{IN}=24.0V$	-	10	-	k $\Omega$
		$V_{IN}=0V$	-	1.6	-	k $\Omega$
PWM Frequency 3)	$f_{PWM}$	-	200		10k	Hz
PWM Duty ratio 3)	$D_{PWM}$	$f_{PWM}=200Hz$	1		100	%
		$f_{PWM}=2kHz$	10	-	100	%
		$f_{PWM}=10kHz$	50	-	100	%
Operating life time 4), 5), 6)	$T$	Temp.=25° C	-	70,000	-	h
		Temp.=70° C	-	53,000	-	h

1)  $V_{IN}$ -turn-on conditions

2)  $V_{IN} = 24V$ , Temp. = 25°C,  $D_{PWM} = 100\%$

### 3) PWM Timing Diagram



Please do not set  $t_{OFF}$  with  $0 \mu s < t_{OFF} < 1 \mu s$ .

In case of lower frequency, the deterioration of the display quality, flicker etc., may occur.

- 4) When brightness decrease 50% of minimum brightness.  
The average life of a LED will decrease when the LCD is operating at higher temperatures.
- 5) Life time is estimated data. (Condition : IF=78mA, Duty=90%, Ta=25°C in chamber).
- 6) Design value of LED



## 6. Optical characteristics

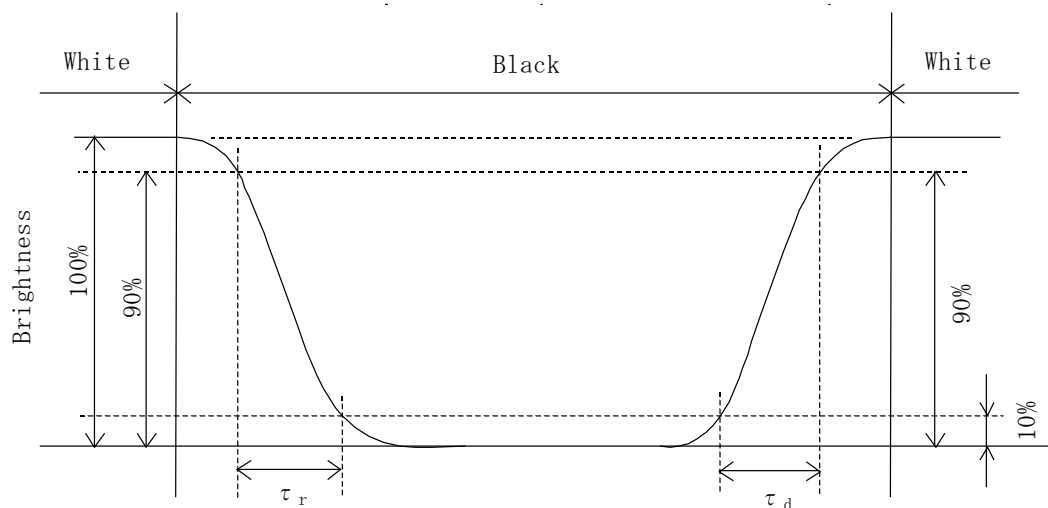
Measuring spot =  $\phi$  6.0mm, Temp. = 25°C

Item		Symbol	Condition	Min.	Typ.	Max.	Unit
Response time	Rise	$\tau_{\text{r}}$	$\theta = \phi = 0^{\circ}$	-	10	-	ms
	Down	$\tau_{\text{d}}$	$\theta = \phi = 0^{\circ}$	-	20	-	ms
Viewing angle range View direction : 6 o'clock (Gray inversion)		$\theta_{\text{UPPER}}$	$\text{CR} \geq 10$	-	60	-	deg.
		$\theta_{\text{LOWER}}$		-	70	-	
		$\phi_{\text{LEFT}}$		-	70	-	deg.
		$\phi_{\text{RIGHT}}$		-	70	-	
Contrast ratio		CR	$\theta = \phi = 0^{\circ}$	350	500	-	-
Brightness		L	IF=78mA/Line Duty=100%	770	1,100	-	cd/m <sup>2</sup>
			IF=78mA/Line Duty=90%	700	1,000	-	cd/m <sup>2</sup>
Chromaticity coordinates	Red	x	$\theta = \phi = 0^{\circ}$	0.550	0.600	0.650	-
		y		0.285	0.335	0.385	
	Green	x	$\theta = \phi = 0^{\circ}$	0.290	0.340	0.390	
		y		0.505	0.555	0.605	
	Blue	x	$\theta = \phi = 0^{\circ}$	0.105	0.155	0.205	
		y		0.065	0.115	0.165	
	White	x	$\theta = \phi = 0^{\circ}$	0.250	0.300	0.350	
		y		0.275	0.325	0.375	

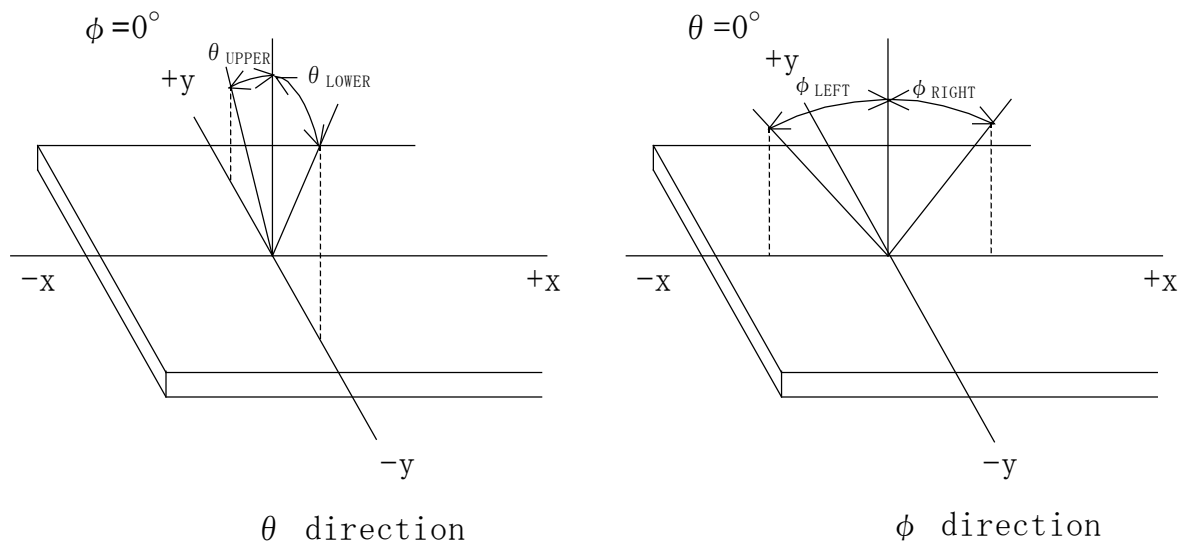
### 6-1. Definition of contrast ratio

$$CR(\text{Contrast ratio}) = \frac{\text{Brightness with all pixels "White"}}{\text{Brightness with all pixels "Black"}}$$

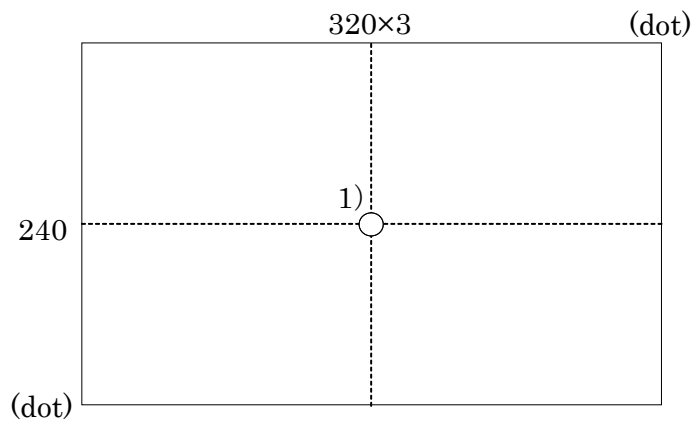
### 6-2. Definition of response time



### 6-3. Definition of viewing angle



### 6-4. Brightness measuring point



- 1) Rating is defined as the white brightness at center of display screen.
- 2) 5 minutes after LED is turned on. (Ambient Temp.=25°C)

## 7. Interface signals

### 7-1. Interface signals

No.	Symbol	Description	Note
1	V <sub>DD</sub>	+3.3V power supply	
2	V <sub>DD</sub>	+3.3V power supply	
3	GND	GND	
4	GND	GND	
5	RxIN0-	LVDS receiver signal CH0(-)	LVDS
6	RxIN0+	LVDS receiver signal CH0(+)	LVDS
7	GND	GND	
8	RxIN1-	LVDS receiver signal CH1(-)	LVDS
9	RxIN1+	LVDS receiver signal CH1(+)	LVDS
10	GND	GND	
11	RxIN2-	LVDS receiver signal CH2(-)	LVDS
12	RxIN2+	LVDS receiver signal CH2(+)	LVDS
13	GND	GND	
14	CK IN1-	LVDS receiver signal CK(-)	LVDS
15	CK IN1+	LVDS receiver signal CK(+)	LVDS
16	GND	GND	
17	RxIN3-	LVDS receiver signal CH3(-)	LVDS
18	RxIN3+	LVDS receiver signal CH3(+)	LVDS
19	NC	No Connect	1)
20	SC	Scan direction control(GND: Normal, High: Reverse)	2)

LCD connector : FI-SE20P-HFE (JAE)

1) Pin 19 is not connected to the internal display circuits. A connection on this pin will not impact the module operation in any way.

2)



SC = L



SC = H

### 7-2. LED

No.	Symbol	Description	Note
1	V <sub>IN</sub>	+24V power supply	
2	V <sub>IN</sub>	+24V power supply	
3	BLBRT	PWM signal(Brightness adjustment)	
4	BLEN	ON/OFF terminal voltage	
5	GND	GND	
6	GND	GND	
7	GND	GND	
8	GND	GND	
9	V <sub>IN</sub>	+24V power supply	
10	V <sub>IN</sub>	+24V power supply	

LCD connector : FI-S10P-HFE (JAE)

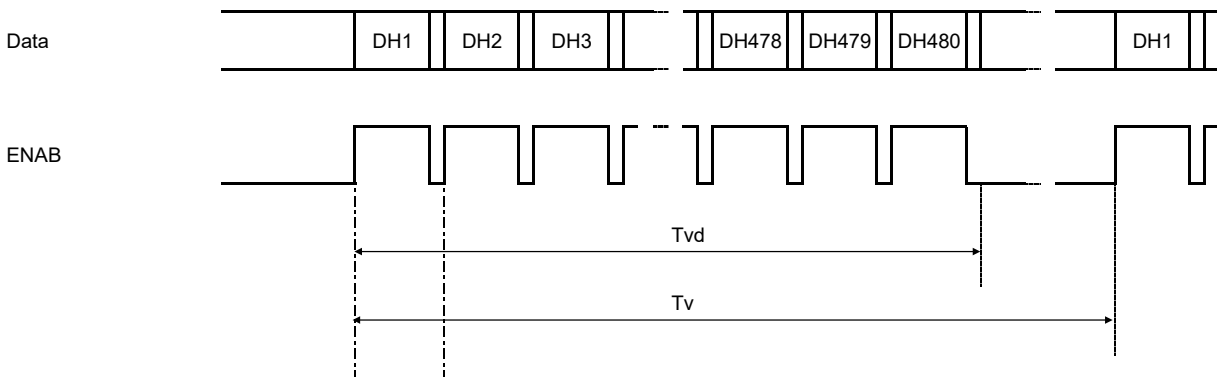
## 8. Input timing characteristics

### 8-1. Timing Characteristics

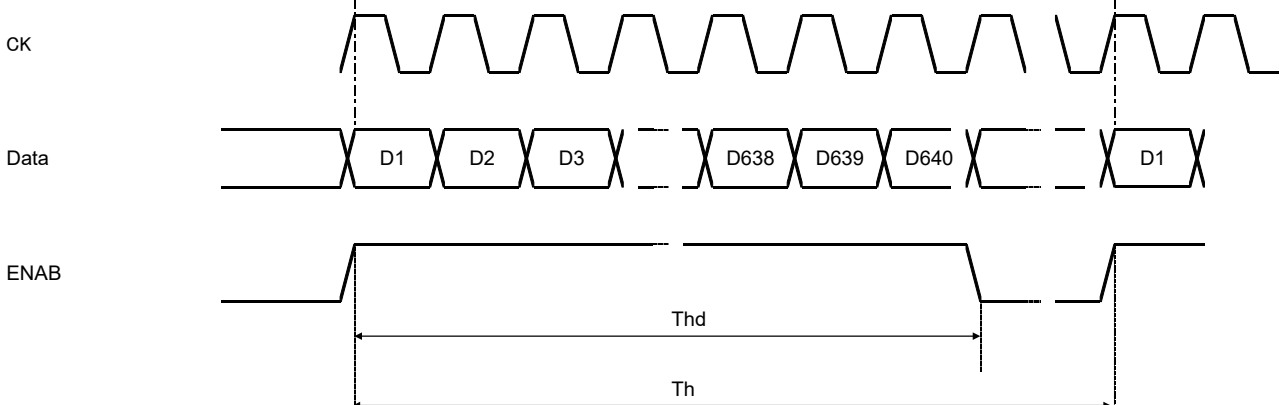
Item		Symbol	Min.	Typ.	Max.	Unit	Note
Clock (CK)	Frequency	1/Tc	22.66	25.2	27.69	MHz	1)
Enable signal (DE)	Horizontal Period	Th	750	800	850	Tc	
			27.1	31.7	-	$\mu s$	2)
	Horizontal display period	Thd	640			Tc	
	Vertical Period	Tv	490	525	590	Th	
Vertical display period		Tvd	480			Th	
Refresh rate		fv	50	60	70	Hz	3)

- 1) If the display is used under the condition which is out of specifications such as higher clock frequency than specified value, there is a possibility phenomenon such as display error including white display, malfunction and no image may occur.  
Please use the display under the conditions written in the specification.
- 2) Please set a clock frequency, a vertical dormant period, and the horizontal dormant period so that the Horizontal Period should not reach less than Min. value.
- 3) If the refresh rate reach less than Min. value, the deterioration of the display quality, flicker etc., may occur.(fv=1/Tv)

### Vertical Timing Diagram

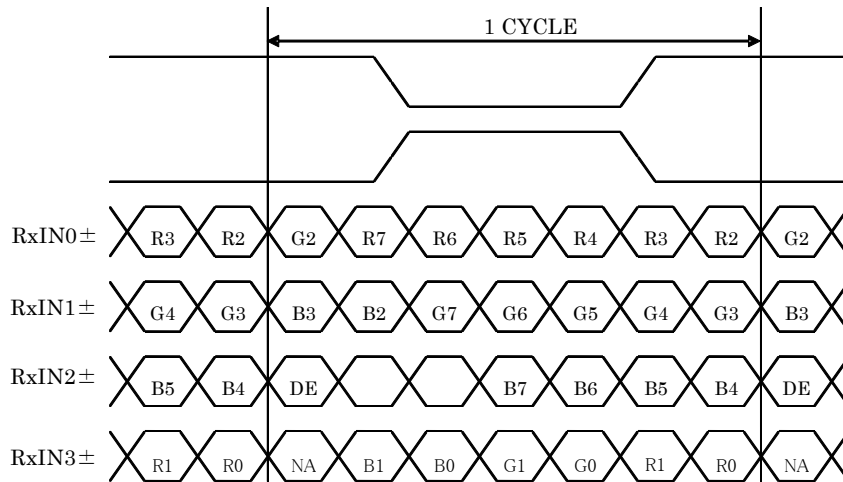


### Horizontal Timing Diagram

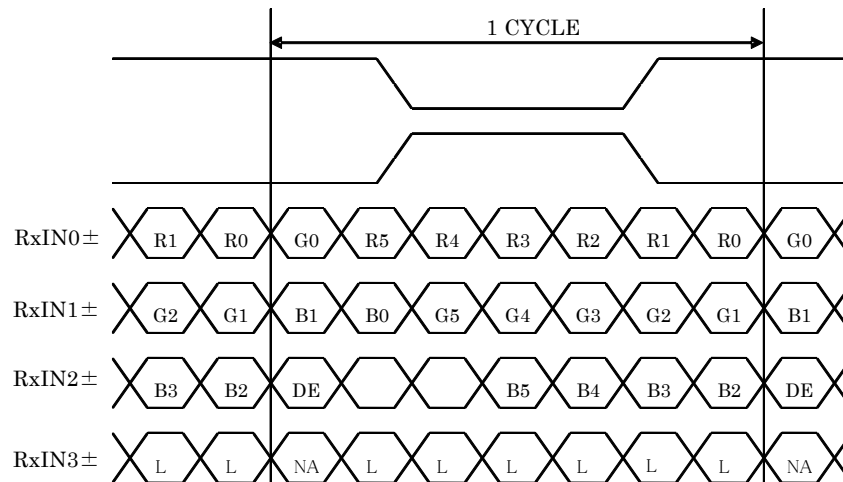


## 8-2. Data

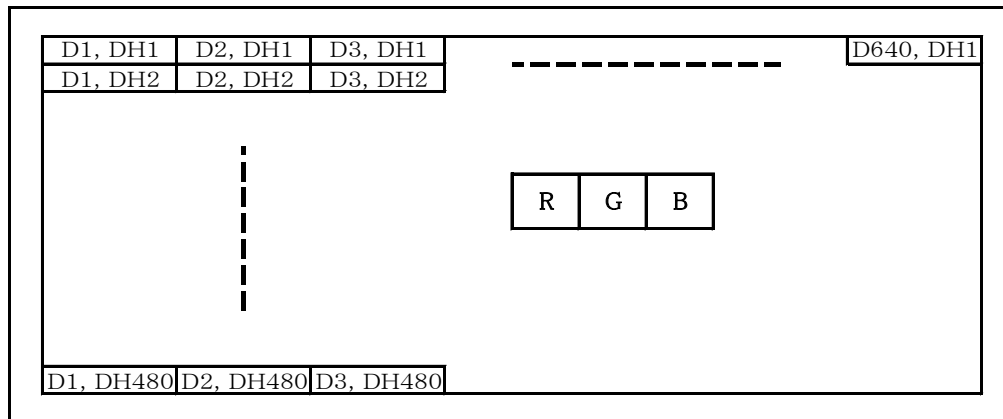
### 8-2-1.8bit Input



### 8-2-2.6bit Input

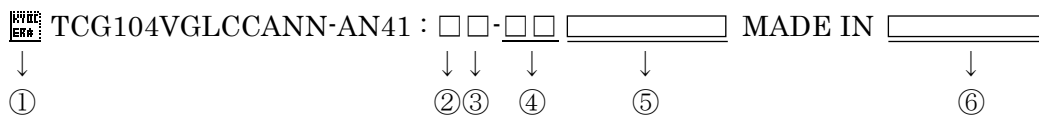


### 8-3. Input Data Signals and Display position on the screen



## 9. Lot number identification

The lot number shall be indicated on the back of the backlight case of each LCD.



No.① – No.⑥ above indicate

- ① Data matrix (For internal control purpose only)
- ② Year code (The last digit of the year)
- ③ Month code
- ④ Day code
- ⑤ Version number (Max. 7 characters)
- ⑥ Country of origin

③ Month code

Month	Jan.	Feb.	Mar.	Apr.	May	Jun.
Code	1	2	3	4	5	6

Month	Jul.	Aug.	Sep.	Oct.	Nov.	Dec.
Code	7	8	9	X	Y	Z

## 10. Warranty

### 10-1. Incoming inspection

Please inspect the LCD within one month after your receipt.

## 10-2. Production warranty

Kyocera warrants its LCD's for a period of 12 months from the ship date. Kyocera shall, by mutual agreement, replace or re-work defective LCD's that are shown to be Kyocera's responsibility.

## 11. Precautions for use

### 11-1. Installation of the LCD

- 1) A transparent protection plate shall be added to protect the LCD and its polarizer
- 2) The LCD shall be installed so that there is no pressure on the LSI chips.
- 3) The LCD shall be installed flat, without twisting or bending.
- 4) A transparent protection sheet is attached to the polarizer. Please remove the protection film slowly before use, paying attention to static electricity.

### 11-2. Static electricity

- 1) Since CMOS ICs are mounted directly onto the LCD glass, protection from static electricity is required.
- 2) Workers should use body grounding. Operator should wear ground straps.

### 11-3. LCD operation

- 1) The LCD shall be operated within the limits specified. Operation at values outside of these limits may shorten life, and/or harm display images.
- 2) Please select the best display pattern based on your evaluation because flicker, lines or nonuniformity or unevenness can be visible depending on display patterns.

### 11-4. Storage

- 1) The LCD shall be stored within the temperature and humidity limits specified.  
Store in a dark area, and protect the LCD from direct sunlight or fluorescent light.
- 2) Always store the LCD so that it is free from external pressure onto it.

### 11-5. Usage

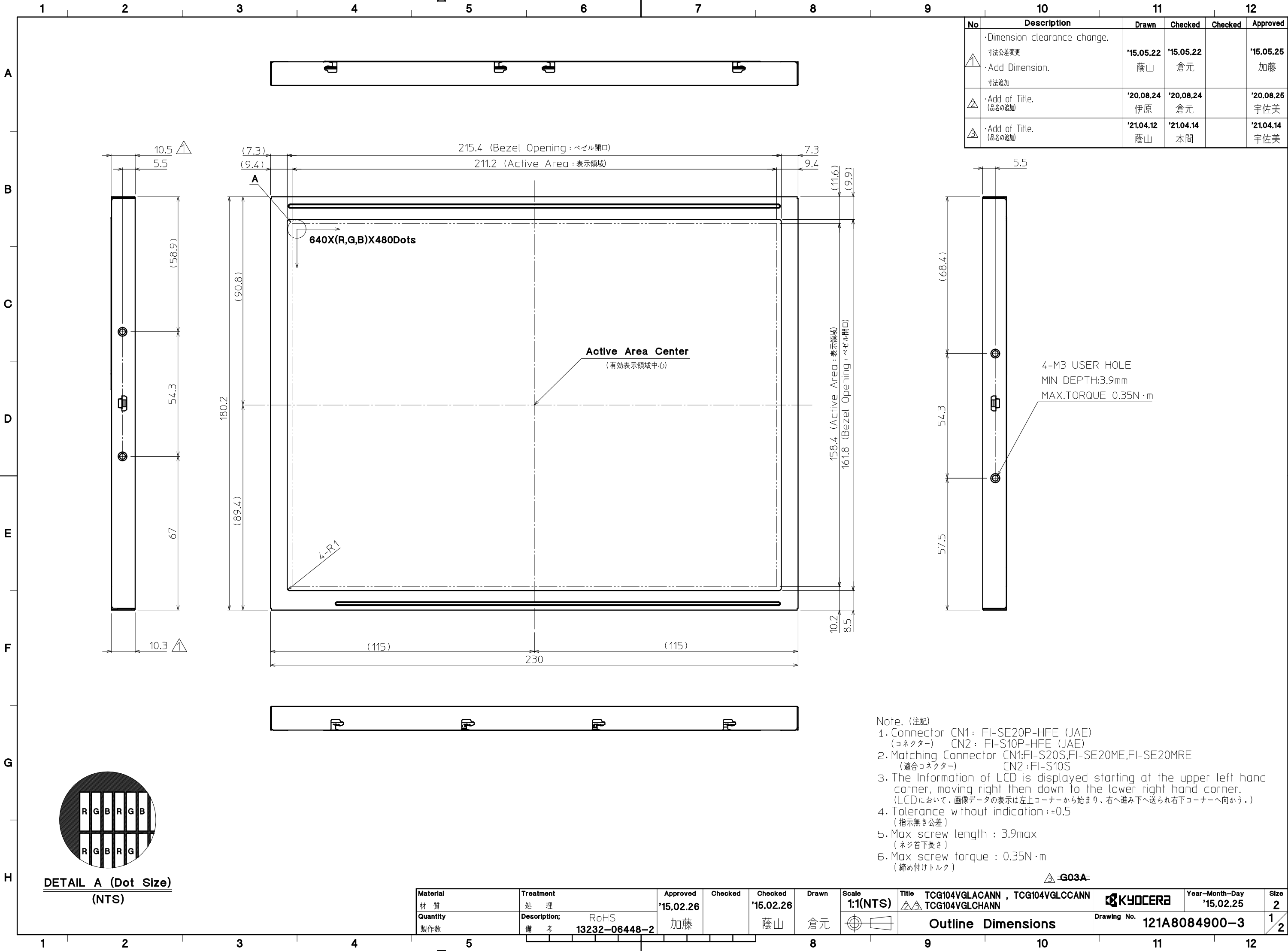
- 1) **DO NOT** store in a high humidity environment for extended periods. Polarizer degradation bubbles, and/or peeling off of the polarizer may result.
- 2) The front polarizer is easily scratched or damaged. Prevent touching it with any hard material, and from being pushed or rubbed.
- 3) The LCD screen may be cleaned by wiping the screen surface with a soft cloth or cotton pad using a little Ethanol.
- 4) Water may cause damage or discoloration of the polarizer. Clean condensation or moisture from any source immediately.
- 5) Always keep the LCD free from condensation during testing. Condensation may permanently spot or stain the polarizer.
- 6) Do not disassemble LCD because it will result in damage.
- 7) This Kyocera LCD has been specifically designed for use in general electronic devices, but not for use in a special environment such as usage in an active gas. Hence, when the LCD is supposed to be used in a special environment, evaluate the LCD thoroughly beforehand and do not expose the LCD to chemicals such as an active gas.
- 8) Please do not use solid-base image pattern for long hours because a temporary afterimage may appear. We recommend using screen saver etc. in cases where a solid-base image pattern must be used.
- 9) Liquid crystal may leak when the LCD is broken. Be careful not to let the fluid go into your eyes and mouth. In the case the fluid touches your body; rinse it off right away with water and soap.

## 12. Reliability test data

Test item	Test condition	Test time	Judgement
High temp. atmosphere	80°C	240h	Display function : No defect Display quality : No defect Current consumption : No defect
Low temp. atmosphere	-30°C	240h	Display function : No defect Display quality : No defect Current consumption : No defect
High temp. humidity atmosphere	40°C 90% RH	240h	Display function : No defect Display quality : No defect Current consumption : No defect
Temp. cycle	-30°C 0.5h R.T. 0.5h 80°C 0.5h	10cycles	Display function : No defect Display quality : No defect Current consumption : No defect
High temp. operation	80°C	500h	Display function : No defect Display quality : No defect Current consumption : No defect

- 1) Each test item uses a test LCD only once. The tested LCD is not used in any other tests.
- 2) The LCD is tested in circumstances in which there is no condensation.
- 3) The reliability test is not an out-going inspection.
- 4) The result of the reliability test is for your reference purpose only.  
The reliability test is conducted only to examine the LCD's capability.





No	Description	Drawn	Checked	Checked	Approved
△	・Dimension clearance change. 寸法公差変更	'15.05.22 蔭山	'15.05.22 倉元		'15.05.25 加藤
△	・Add Dimension. 寸法追加	'20.08.24 伊原	'20.08.24 倉元		'20.08.25 宇佐美
△	・Add of Title. (品名の追加)	'21.04.12 蔭山	'21.04.14 本間		'21.04.14 宇佐美

Note. (注記)

- Connector CN1: FI-SE20P-HFE (JAE)  
(コネクタ) CN2: FI-S10P-HFE (JAE)
- Matching Connector CN1:FI-S20S,FI-SE20ME,FI-SE20MRE  
(適合コネクタ) CN2:FI-S10S
- The Information of LCD is displayed starting at the upper left hand corner, moving right then down to the lower right hand corner.  
(LCDにおいて、画像データの表示は左上コーナーから始まり、右へ進み下へ送られ右下コーナーへ向かう。)
- Tolerance without indication : ±0.5  
(指示無き公差)
- Max screw length : 3.9max  
(ネジ首下長さ)
- Max screw torque : 0.35N・m  
(締め付けトルク)

△ G03A

Material 材 質	Treatment 処 理	Approved '15.02.26	Checked	Checked '15.02.26	Drawn	Scale 1:1(NTS)	Title △△ TCG104VGLACANN , TCG104VGLCANN TCG104VGLCHANN	KYOCERA	Year-Month-Day '15.02.25	Size 2
Quantity 製作数	Description; 備 考	RoHS 13232-06448-2	加藤	蔭山	倉元	△	Outline Dimensions	Drawing No.	121A8084900-3	1 2



Spec No.	TQ3C-8EAF0-E2YAG67-01
Date	August 29, 2024

## **KYOCERA INSPECTION STANDARD**

**TYPE : TCG104VGLCCANN-AN41**

KYOCERA CORPORATION

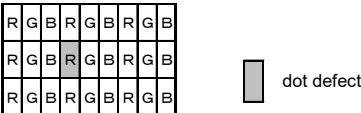
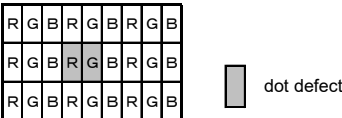
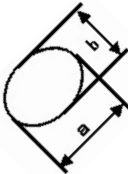
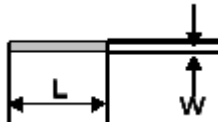
Original Issue Date	Designed by : Engineering dept.			Confirmed by : QA dept.
	Prepared	Checked	Approved	Approved
January 22, 2018	<i>K. Komurasaki</i>	<i>T. Fukui</i>	<i>M. Kato</i>	<i>T. Sawada</i>

### Revision record

Date		Designed by : Engineering dept.			Confirmed by : QA dept.
		Prepared	Checked	Approved	Approved
August 29, 2024		<i>K. Komurasaki</i>	<i>T. Fukui</i>	<i>M. Kato</i>	<i>T. Sawada</i>
Rev. No.	Date	Page	Descriptions		
01	Aug 29, 2024	Cover page	Change the company name from KYOCERA DISPLAY CORPORATION to KYOCERA CORPORATION.		
		1	Dot defect Modify the definition of black dot defect and add white dot defect.		
			Definition of circle size Modify the figure and add a description.		

## Visuals specification

### 1) Note

	Note		
General	<p>1. Customer identified anomalies not defined within this inspection standard shall be reviewed by Kyocera, and an additional standard shall be determined by mutual consent.</p> <p>2. This inspection standard about the image quality shall be applied to any defect within the active area and shall not be applicable to outside of the area.</p> <p>3. Inspection conditions</p> <p>Luminance : 500 Lux min.</p> <p>Inspection distance : 300 mm.</p> <p>Temperature : 25 ± 5°C</p> <p>Direction : Directly above</p>		
Definition of inspection item	Dot defect	Bright dot defect	<p>The dot is constantly “on” when power applied to the LCD, even when all “Black” data sent to the screen.</p> <p>Inspection tool: 5% Transparency neutral density filter.</p> <p>Count dot: If the dot is visible through the filter.</p> <p>Don't count dot: If the dot is not visible through the filter.</p> 
		Black dot defect	<p>The dot is constantly “off” when power applied to the LCD, even when all “White” data sent to the screen.</p> <p>Similar size compared to bright dot.</p>
		White dot defect (Circular/foreign particle)	<p>Pixel works electrically, however, circular/foreign particle makes dot appear to be “on” even when all “Black” data is sent to the screen.</p>
		Adjacent dot	<p>Adjacent dot defect is defined as two or more bright dot defects or black dot defects.</p> 
	External inspection	Bubble, Scratch, Foreign particle (Polarizer, Cell, Backlight)	<p>Visible operating (all pixels “Black” or “White”) and non operating.</p>
		Appearance inspection	<p>Does not satisfy the value at the spec.</p>
	Definition of size	<p>Definition of circle size</p>  <p>a: major axis, b: minor axis</p> <p><math>d = (a + b) / 2</math></p> <p>Definition of linear size</p> 	

## 2) Standard

Classification		Inspection item		Judgement standard																	
Defect (in LCD glass)	Dot defect	Bright dot defect		Acceptable number : 4 Bright dot spacing : 5 mm or more																	
		Black dot defect		Acceptable number : 5 Black dot spacing : 5 mm or more																	
		2 dot join	Bright dot defect	Acceptable number : 2																	
			Black dot defect	Acceptable number : 3																	
		3 or more dots join		Acceptable number : 0																	
		Total dot defects		Acceptable number : 5 Max																	
		Others	White dot, Dark dot (Circle)		<table><tr><td>Size (mm)</td><td colspan="2">Acceptable number</td></tr><tr><td><math>d \leq 0.2</math></td><td colspan="2">(Neglected)</td></tr><tr><td><math>0.2 &lt; d \leq 0.4</math></td><td colspan="2">5</td></tr><tr><td><math>0.4 &lt; d \leq 0.5</math></td><td colspan="2">3</td></tr><tr><td><math>0.5 &lt; d</math></td><td colspan="2">0</td></tr></table>			Size (mm)	Acceptable number		$d \leq 0.2$	(Neglected)		$0.2 < d \leq 0.4$	5		$0.4 < d \leq 0.5$	3		$0.5 < d$	0
	Size (mm)				Acceptable number																
	$d \leq 0.2$				(Neglected)																
	$0.2 < d \leq 0.4$				5																
$0.4 < d \leq 0.5$	3																				
$0.5 < d$	0																				
External inspection (Defect on Polarizer or between Polarizer and LCD glass)	Polarizer (Scratch)		<table><tr><td>Width (mm)</td><td>Length (mm)</td><td>Acceptable number</td></tr><tr><td><math>W \leq 0.1</math></td><td>—</td><td>(Neglected)</td></tr><tr><td rowspan="2"><math>0.1 &lt; W \leq 0.3</math></td><td><math>L \leq 5.0</math></td><td>(Neglected)</td></tr><tr><td><math>5.0 &lt; L</math></td><td>0</td></tr><tr><td><math>0.3 &lt; W</math></td><td>—</td><td>0</td></tr></table>			Width (mm)	Length (mm)	Acceptable number	$W \leq 0.1$	—	(Neglected)	$0.1 < W \leq 0.3$	$L \leq 5.0$	(Neglected)	$5.0 < L$	0	$0.3 < W$	—	0		
	Width (mm)	Length (mm)	Acceptable number																		
	$W \leq 0.1$	—	(Neglected)																		
	$0.1 < W \leq 0.3$	$L \leq 5.0$	(Neglected)																		
		$5.0 < L$	0																		
	$0.3 < W$	—	0																		
	Polarizer (Bubble)		<table><tr><td>Size (mm)</td><td colspan="2">Acceptable number</td></tr><tr><td><math>d \leq 0.2</math></td><td colspan="2">(Neglected)</td></tr><tr><td><math>0.2 &lt; d \leq 0.3</math></td><td colspan="2">5</td></tr><tr><td><math>0.3 &lt; d \leq 0.5</math></td><td colspan="2">3</td></tr><tr><td><math>0.5 &lt; d</math></td><td colspan="2">0</td></tr></table>			Size (mm)	Acceptable number		$d \leq 0.2$	(Neglected)		$0.2 < d \leq 0.3$	5		$0.3 < d \leq 0.5$	3		$0.5 < d$	0		
	Size (mm)	Acceptable number																			
	$d \leq 0.2$	(Neglected)																			
	$0.2 < d \leq 0.3$	5																			
$0.3 < d \leq 0.5$	3																				
$0.5 < d$	0																				
Foreign particle (Circular shape)		<table><tr><td>Size (mm)</td><td colspan="2">Acceptable number</td></tr><tr><td><math>d \leq 0.2</math></td><td colspan="2">(Neglected)</td></tr><tr><td><math>0.2 &lt; d \leq 0.4</math></td><td colspan="2">5</td></tr><tr><td><math>0.4 &lt; d \leq 0.5</math></td><td colspan="2">3</td></tr><tr><td><math>0.5 &lt; d</math></td><td colspan="2">0</td></tr></table>			Size (mm)	Acceptable number		$d \leq 0.2$	(Neglected)		$0.2 < d \leq 0.4$	5		$0.4 < d \leq 0.5$	3		$0.5 < d$	0			
Size (mm)	Acceptable number																				
$d \leq 0.2$	(Neglected)																				
$0.2 < d \leq 0.4$	5																				
$0.4 < d \leq 0.5$	3																				
$0.5 < d$	0																				
Foreign particle (Linear shape) Scratch		<table><tr><td>Width (mm)</td><td>Length (mm)</td><td>Acceptable number</td></tr><tr><td><math>W \leq 0.03</math></td><td>—</td><td>(Neglected)</td></tr><tr><td rowspan="3"><math>0.03 &lt; W \leq 0.1</math></td><td><math>L \leq 2.0</math></td><td>(Neglected)</td></tr><tr><td><math>2.0 &lt; L \leq 4.0</math></td><td>3</td></tr><tr><td><math>4.0 &lt; L</math></td><td>0</td></tr><tr><td><math>0.1 &lt; W</math></td><td>—</td><td>(According to circular shape)</td></tr></table>			Width (mm)	Length (mm)	Acceptable number	$W \leq 0.03$	—	(Neglected)	$0.03 < W \leq 0.1$	$L \leq 2.0$	(Neglected)	$2.0 < L \leq 4.0$	3	$4.0 < L$	0	$0.1 < W$	—	(According to circular shape)	
Width (mm)	Length (mm)	Acceptable number																			
$W \leq 0.03$	—	(Neglected)																			
$0.03 < W \leq 0.1$	$L \leq 2.0$	(Neglected)																			
	$2.0 < L \leq 4.0$	3																			
	$4.0 < L$	0																			
$0.1 < W$	—	(According to circular shape)																			
Color variation (Mura)		Not to be significantly visible. Consultation shall be held as necessary.																			