

## 750VDC, Fast Acting Fuse for EV/HEV

### ST4302 Series

#### Description

- Fast Acting fuse for EV/HEV
- 750Vdc ideal for EV or HEV application
- Excellent DC performance

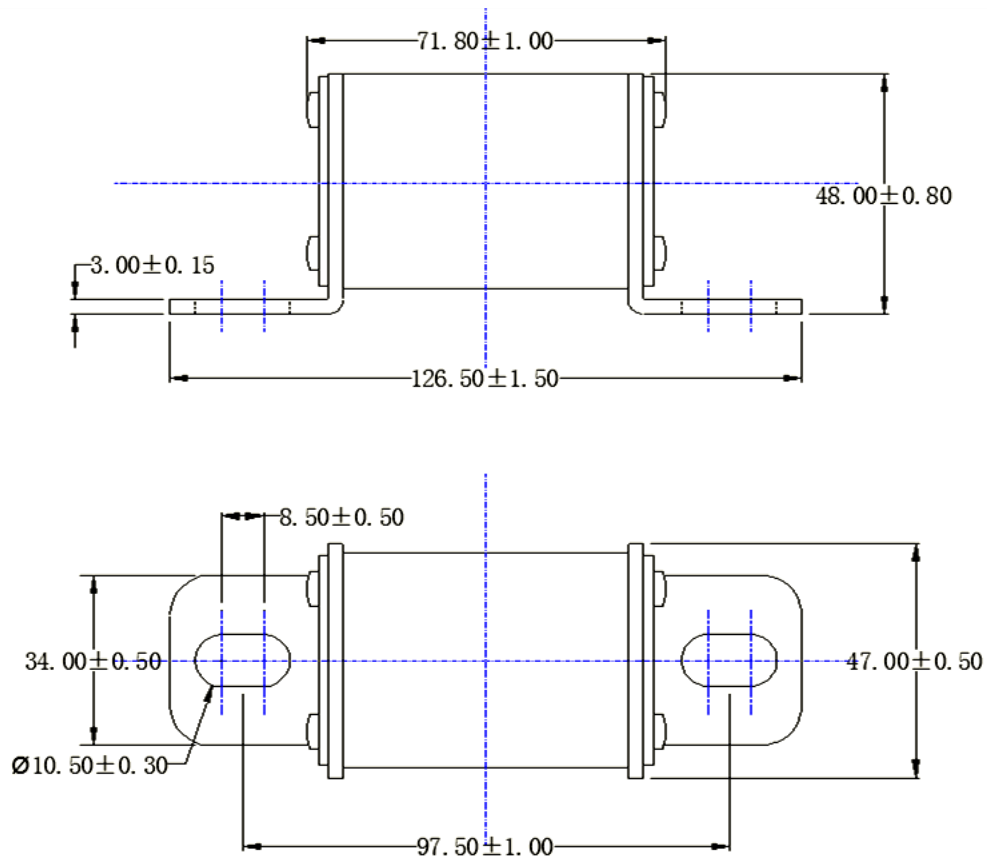
#### Specifications

Ordering P/N	Rated Current (A)	Rated Voltage (DCV)	Breaking Capacity (A)	0.5In Power loss 0.5In (W)
ST4302-500	500	750	20000	<20
ST4302-600	600	750	20000	<25

\*Temperature Rise : <50K with 50% of rated current

#### Dimension (mm)

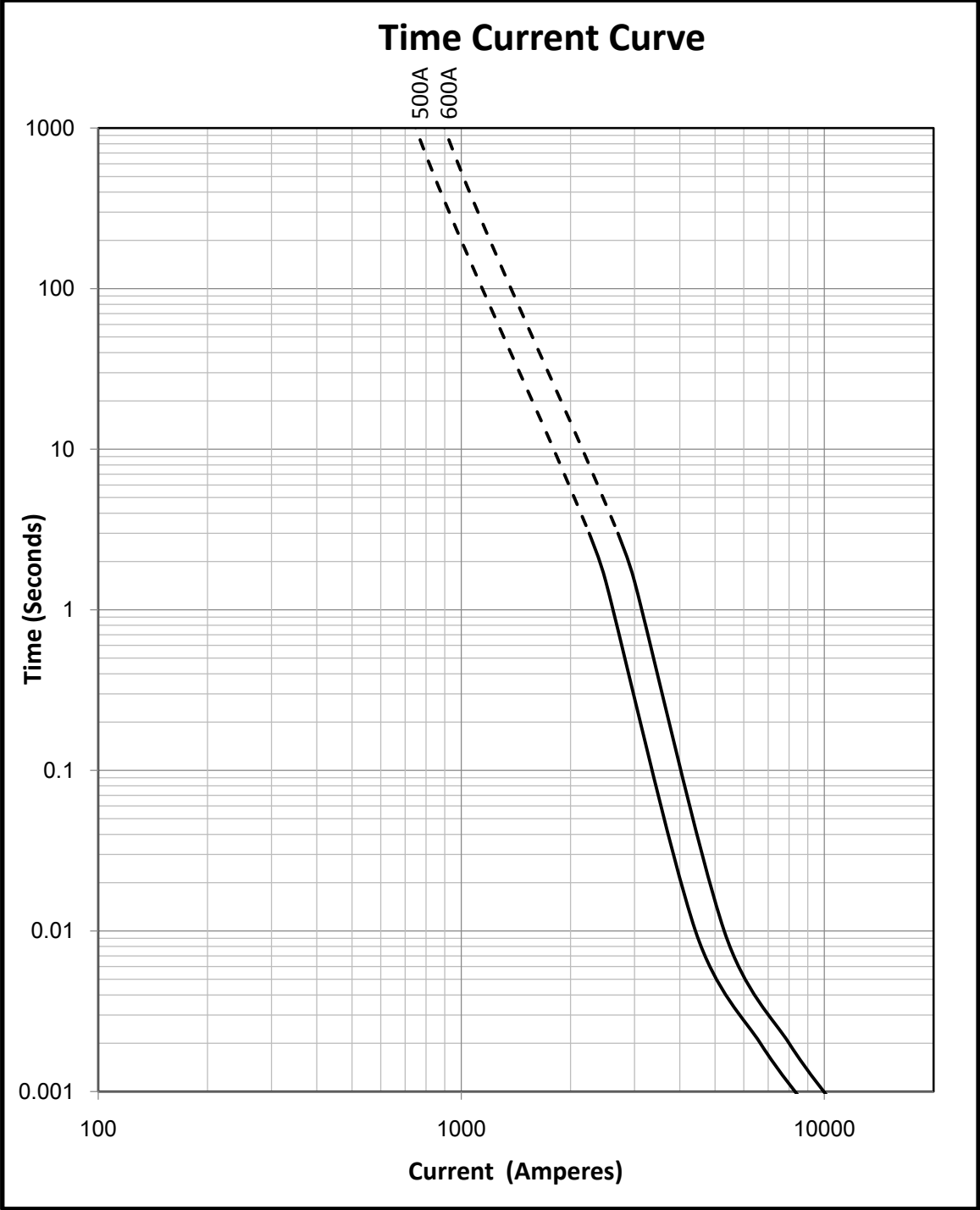
Type: Single



750VDC, Fast Acting Fuse for EV/HEV  
ST4302 Series



Time-Current Curve



# 750VDC, Fast Acting Fuse for EV/HEV

## ST4302 Series

### Transportation and Storage

During transportation and storage, should avoid water seepage and mechanical damage

### Conditions for operation in service

Where the following conditions apply, fuses complying with this standard are deemed capable of operating satisfactorily without further qualification.

Normal temperature:  $-5^{\circ}\text{C}$  to  $40^{\circ}\text{C}$ ;

The altitude of the site of installation of the fuses does not exceed 2 000 m above sea level;

The air is clean and its relative humidity does not exceed 50 % at the maximum temperature of  $40^{\circ}\text{C}$ ;

Higher relative humidities are permitted at lower temperatures, e.g. 90 % at  $20^{\circ}\text{C}$ ;

Under these conditions, moderate condensation may occasionally occur due to variation in temperature.

For operation condition other than above, please contact manufacturer.

### Vibration

Meet JASO D622:2006 Section 6.3.3 Vibration durability test requirement, can be use on Electrical Vehicle application;

### Temperature Re-Rating Curve

