



1000VDC, Fast Acting Fuse ST3710-xxx Series

Sensata Technologies



Description

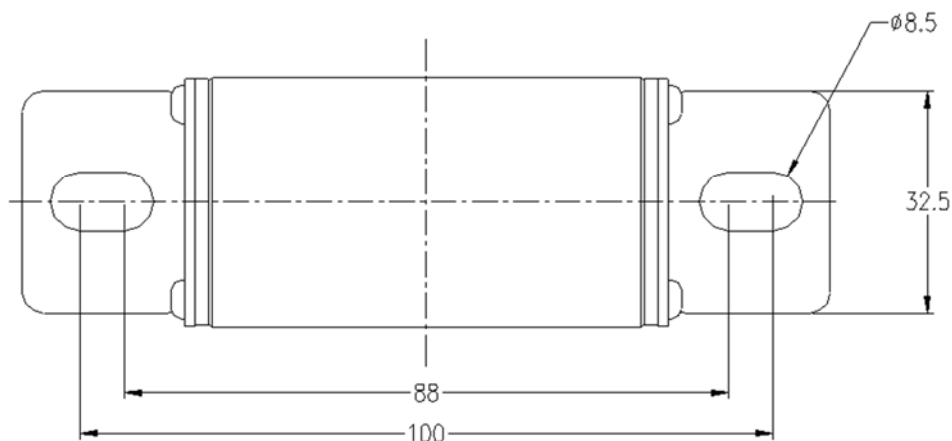
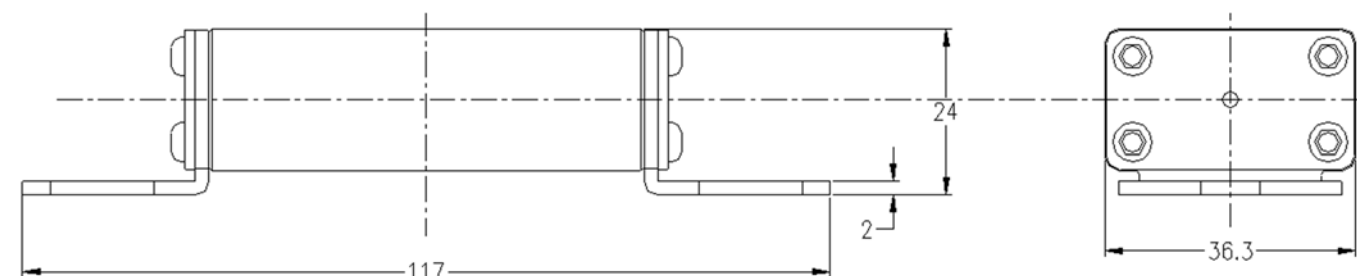
- Fast Acting fuse for DC Application
- Stud-mount, optional for other installation
- Excellent DC performance
- Design to UL248-1 & UL248-20
- Comply RoHS directive

Specifications

Ordering P/N	Rated Current (A)	Rated Voltage (VDC)	Breaking Capacity	0.5I _n Power loss (W)
ST3710-150	150	1000V	50kA @ 1000Vdc	4.5
ST3710-200	200			6.6
ST3710-250	250			8.5

Dimension (mm)

Type: Single



Note: 12+/-1Nm (M8)



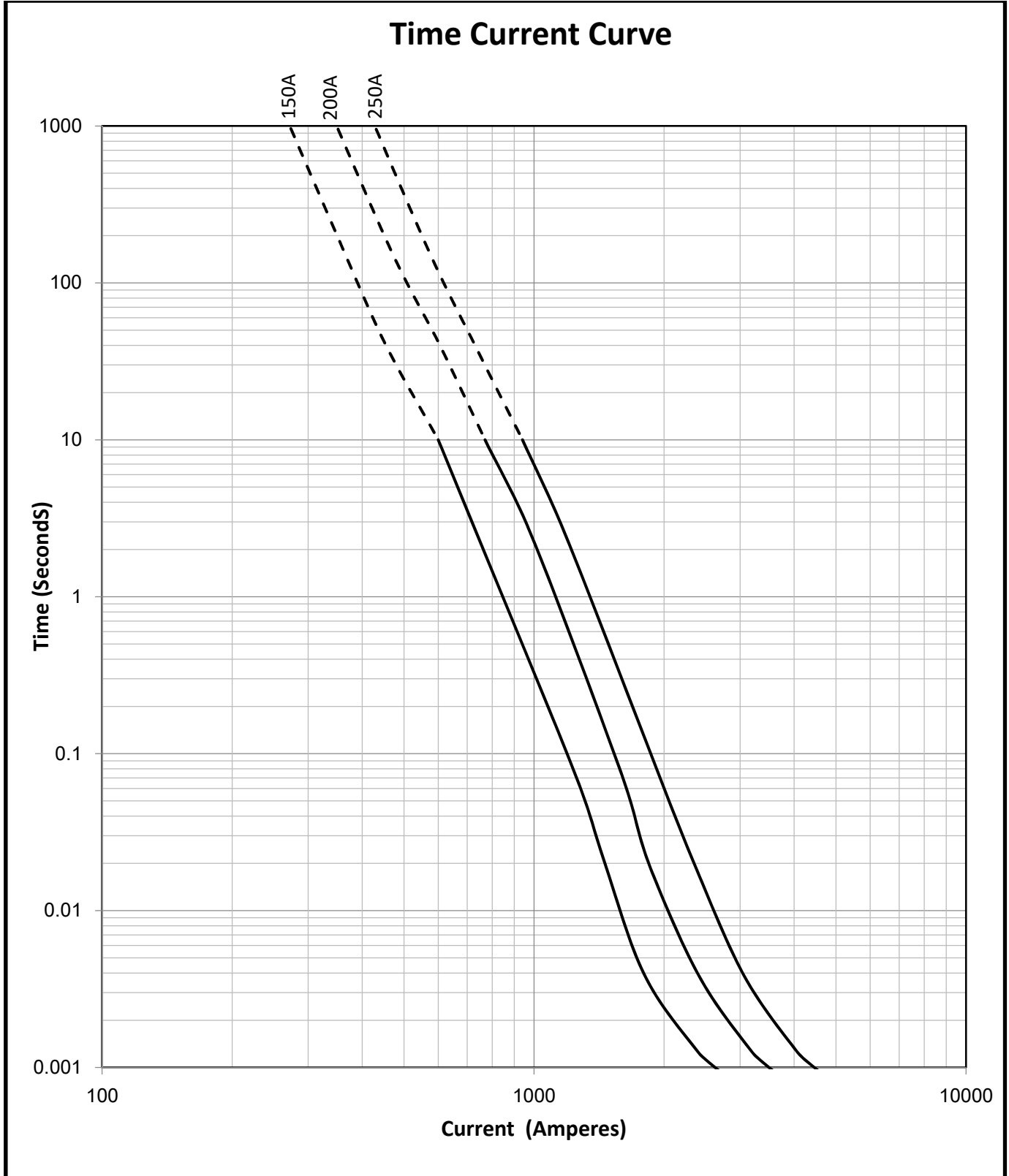
1000VDC, Fast Acting
Fuse ST3710-xxx Series

Sensata

Technologies



Time-Current Curve



1000VDC, Fast Acting
Fuse ST3710-xxx Series



Transportation and Storage

During transportation and storage, should avoid water seepage and mechanical damage

Conditions for operation in service

Where the following conditions apply, fuses complying with this standard are deemed capable of operating satisfactorily without further qualification.

Normal temperature: -5°C to 40°C;

The altitude of the site of installation of the fuses does not exceed 2 000 m above sea level;

The air is clean and its relative humidity does not exceed 50 % at the maximum temperature of 40°C;

Higher relative humidities are permitted at lower temperatures, e.g. 90 % at 20°C;

Under these conditions, moderate condensation may occasionally occur due to variation in temperature.

For operation condition other than above, please contact manufacturer.

Vibration

Meet JASO D622:2006 Section 6.3.3 Vibration durability test requirement, can be use on Electrical Vehicle application

Temperature Re-Rating Curve

Operating Temperature: -40°C to +100°C, with proper rerating factor applied

